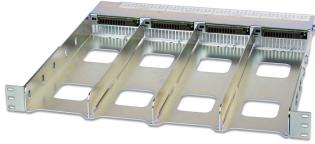


PS-R-1



PowerShift® Rack, accommodates up to 4 modules (3 separate circuits each for a total capacity of 12 RRU's when all 4 modules are installed)

- Reduced capital/operating expenditures
- Engineering flexibility
- Future-ready design

Product Classification

Product Type	Shelf
Product Brand	PowerShift®
Product Series	V1

General Specifications

Application	Mounts PowerShift® modules
Color	Silver metallic
Rack Type	EIA 19 in
Rack Units	1
Shelf Movement	Fixed

Dimensions

Height	44.45 mm 1.75 in
Width	482.6 mm 19 in
Depth	431.8 mm 17 in

Electrical Specifications

Electrical Safety Standard	UL60950-UL/cUL with CB report
-----------------------------------	-------------------------------

Packaging and Weights

Packaging quantity	1
Weight, net	4.536 kg 10 lb

Regulatory Compliance/Certifications

Agency	Classification
---------------	-----------------------

PS-R-1

CE Compliant with the relevant CE product directives
ISO 9001:2015 Designed, manufactured and/or distributed under this quality management system

